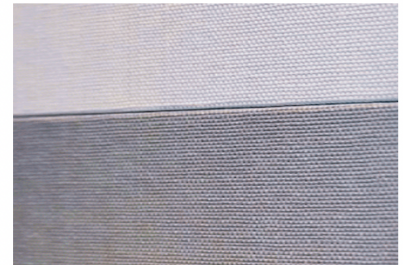
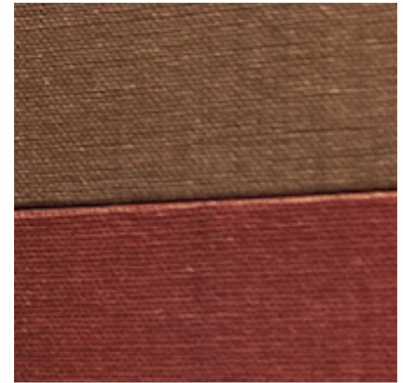
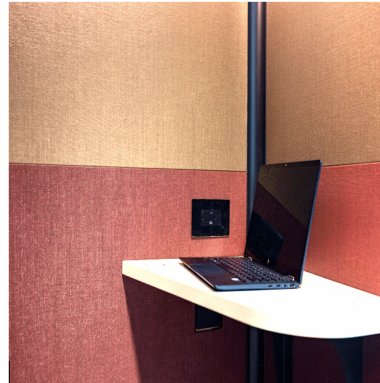


FACET

We offer our pod interiors in standard gray, or designers can use their own panel-wrap fabric. We also offer Carnegie's line of sustainably produced Xorel fabrics, which are bleach cleanable, inherently antibacterial, stain resistant and non-absorbent.

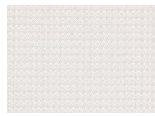
**OUR CARNEGIE FABRIC COLLECTION**

OUR COLLECTION IS COMPRISED OF HIGH PERFORMANCE SUSTAINABLY PRODUCED ACOUSTIC FABRIC PANELS INCLUDING XOREL.

FACET



Pop Embo...



Mesh 18



Meteor 753



Meteor 705



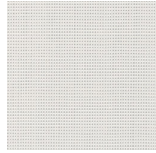
Strie 818



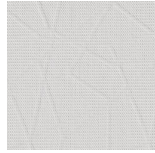
Sahara Mat...



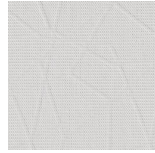
Sahara Mat...



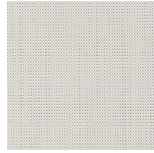
Sahara Mat...



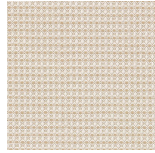
Fractal Em...



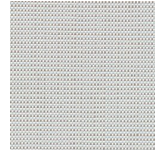
Fractal Em...



Sahara Mat...



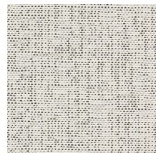
Mesh 4



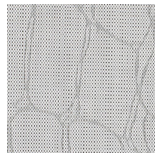
Meteor 741



Parchment ...



Linene 4



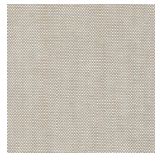
Nile Embos...



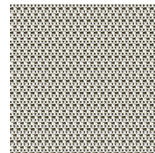
Linen 10



Linen 6



Sahara Mat...



Prism 162



Luxe 4



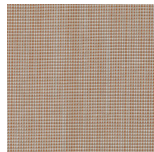
Meteor 735



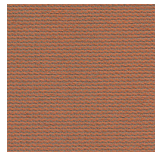
Meteor 742



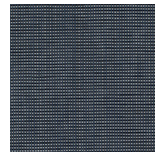
Meteor 766



Mojave Ma...



Circuit 18



Mojave Ma...

SPECIFICATIONS INCLUDE:

- Inherently, stain resistant, colorfast, antibacterial, durable and non-absorbent
- Bleach cleanable
- Free of PVC, chlorine, plasticizers, heavy metals and ozone depleting chemical finishes
- Solution-dyed polyethylene yarn is non-porous, non-fibrous and can safely be cleaned with most dominant cleaners and even UVC disinfecting

Third party certified:

FACET

- FAC IS Certified: Biobased Xorel Gold and Xorel Silver
- SCS Indoor Advantage - Gold
- Biobased Xorel is Living Product Challenge Certified
- ASTM E84-15 - Flame Spread and Smoke Developed - Class A and Type 1
- NFPA 701, NFPA 255, CAL Title 19, UL 1286
- Indoor Air Quality: ASTM D5116-97
- Colorfastness: Class 5 - no fading

Approved:

- Approved for Healthcare and High Performance Schools
- LBC & HPD compliant

NOW TELL ME MORE ABOUT EXTERIORS!

DOWNLOAD OUR PRODUCT DESIGN GUIDE

About

OUR STORY

GET A QUOTE

REVIEWS

CAREERS

Connect

INSTAGRAM

LINKEDIN

PINTEREST

More

SUSTAINABILITY AND
RESPONSIBILITY POLICY

COMMON QUESTIONS

PRIVACY POLICY